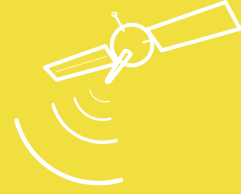




Wellshow
Always Innovation



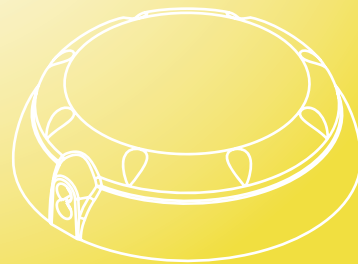
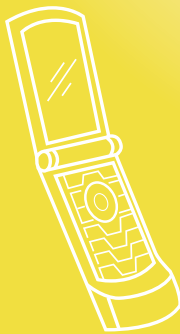
047



PRODUCT SPECIFICATION

GPS/GSM R30 Two In One Antenna

Product No. AP002WSG05XXX



RF Connector, RF Cable & Antenna Manufacturer

E-mail: sales@wellshow.com.tw
Tel: +886-2-24239376 Fax: +886-2-24260387
9F., No.181, Nanrong Rd., Ren-ai Dist., Keelung City 200, Taiwan (R.O.C.)

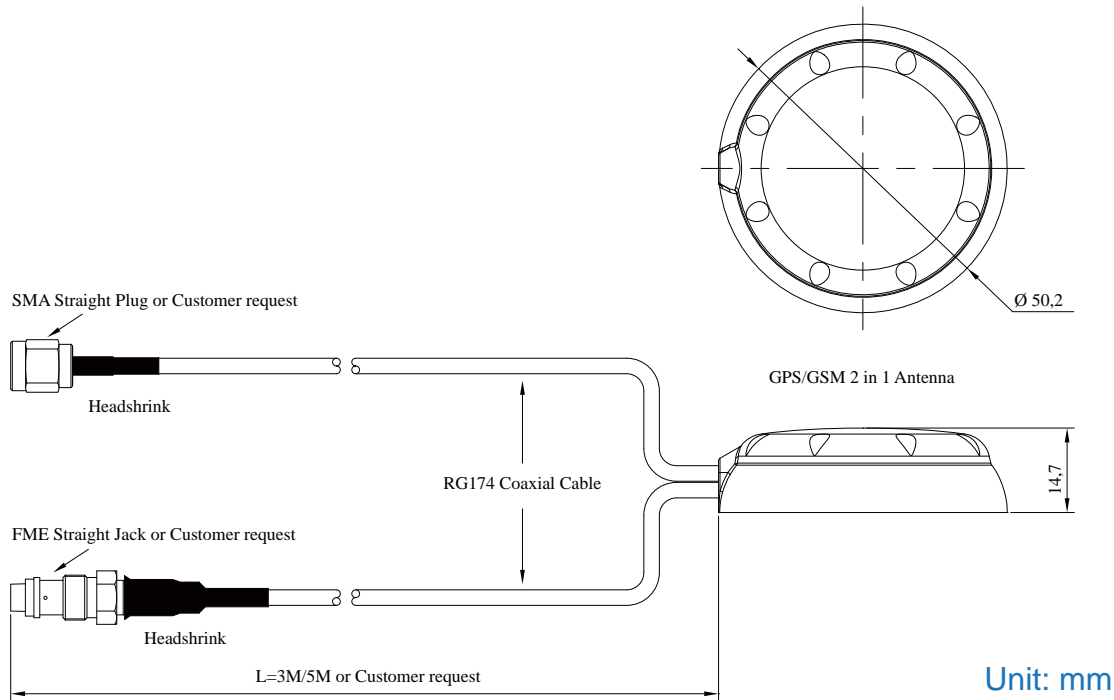


GPS/GSM R30 Two In One Antenna

Product No. AP002WSG05XXX



Structure Figure



Unit: mm

GSM Specification

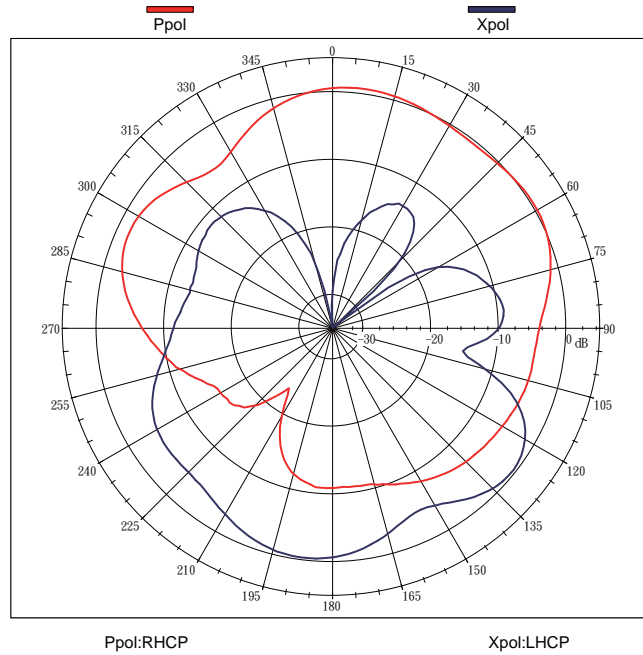
Description	Specification
Frequency Range	900/1800MHz
Polarization	Vertical
Gain	0 dBi
V.S.W.R	< 2.0
Impedance	50 ohm
Power handling capacity	10W max
Cable Type	RG174
Cable Length	3M / 5M or customer request
Connector	SMA, FME...etc

GPS Specification

Mechanical		
Cable Type	RG174	
Cable Length	3M / 5M or customer request	
Connector Type	SMA, SMB, MCX, MMCX...etc	
Color	Black	
Electrical		
Center Frequency	1575.42±1.023 MHz	
Bandwidth (10dB return loss)	10 MHz	
Gain at Zenith	5.0 dBi typ.	
Gain at 10° elevation	-1.0 dBi min.	
Polarization	R.H.C.P	
Impedance	50 ohm	
Axial Ratio	1.0 dB typ.	
LNA Performance		
Center Frequency	1575.42±1.023 MHz	
Gain	27 dB typ.	
Noise Figure	1.5 dB typ.	
Filter Out Band Attenuation	Dielectric	
Output VSWR	2.0 max	
Voltage	5.0V	3.3V
Current	22mA max	15mA max



GPS Radiation Pattern(without LNA)



Far-field amplitude at 900 MHz

Far-field amplitude at 1800 MHz

